

h/p/cosmos[®] coscom[®] v4

treadmills & ergometers interface communication protocol

Basic Remote Service

Created for the legal manufacturer:

h/p/cosmos sports & medical gmbh

Am Sportplatz 8

DE 83365 Nussdorf-Traunstein

Germany

phone + 49 86 69 86 42 0

fax + 49 86 69 86 42 49

email@hpcosmos.com

www.hpcosmos.com

EUDAMED ID: SRN: [DE-MF-000006147](https://eudamed.eu/DE-MF-000006147)

Authors:

M. Sc. Andreas Feil,

Altotec Hard- und Software GmbH

Altofing 7, 83367 Petting / Germany

Franz Harrer, CEO & President

h/p/cosmos sports & medical gmbh

Am Sportplatz 8, DE 83365 Nussdorf-Traunstein

published: www.coscom.org

article #: **cos100115v4**

date: **2010-11-11**

Scope: applicable for all h/p/cosmos treadmills with Basic UDI-DI 4050588004002 (treadmill h/p/cosmos 150/50 G6 (pluto, mercury), 4050588004019 treadmill h/p/cosmos 150/50 (locomotion), 4050588004033 treadmill h/p/cosmos 170-190/65 3p (quasar 3p, pulsar 3p), 4050588004040 treadmill h/p/cosmos 200-300/75-125 (venus, saturn) and their respective OEM models.

© Copyright 2021 h/p/cosmos sports & medical gmbh

As a contribution to h/p/cosmos' efforts for development and updating the coscom protocol, all users of the coscom protocol and coscom features are obliged to list the name and company logo h/p/cosmos[®] and the copyright of h/p/cosmos[®] in their software menu and their user/operation manual on a well visible position.

Table of contents

[1]	UserTerminals and Micro-Controller-Units MCU1 up to MCU6	4
[2]	Overview	7
[3]	coscom® safety test confirmation and official release document.....	8
[4]	Basic message format.....	8
[5]	Checksum extension	8
[6]	Error messages	10
[7]	Eventing	10
[8]	Safety considerations	11
[8A]	GetDeviceInformation	11
[8B]	Request control – fail-safe and stop state	11
[9]	Feature Matrix	14
[10]	Actions	16
[10A]	GetDeviceInformation	16
[10B]	SetEventMask	17
[10C]	RequestControl	17
[10D]	ResetFailsafe	17
[10E]	SetSpeed	18
[10F]	GetSpeedRange	18
[10G]	GetAccelDecelRange	18
[10H]	HoldSpeed	18
[10I]	SetElevation	19
[10J]	SetElevationWithSpeed	19
[10K]	GetElevationRange	19
[10L]	HoldElevation	19
[10M]	SetPower	20
[10N]	SetTorque	20
[10O]	SetCadence	20
[10P]	Start.....	20
[10Q]	Stop.....	21
[10R]	SetPersonData	21
[10S]	GetPersonData	21
[10T]	ResetCounterValues	21
[10U]	Beep.....	22
[11]	Variables	23
[11A]	ControlStatus.....	23
[11B]	ControlAllowed.....	24
[11C]	ActualSpeed	24

[11D] TargetSpeed.....	25
[11E] ActualElevation	25
[11F] TargetElevation.....	25
[11G] ActualPower	25
[11H] TargetPower.....	25
[11I] ActualTorque	25
[11J] TargetTorque.....	25
[11K] EnergyConsumption	25
[11L] MET.....	26
[11M] Time	26
[11N] Distance.....	26
[11O] ActualCadence	26
[11P] Height	26
[11Q] HeartRate.....	26
[11R] RRInterval	26
[11S] Errors.....	27
[11T] StepHeight	27
[11U] TargetCadence	27
[12] Error Codes.....	27
[13] MCU5 legacy device	28
[14] MCU5 coscom v4 Implementation Notes.....	28
[15] Interface cable	32
[16] Extending h/p/cosmos coscom v4	32
[17] Updates, downloads, simulators, regulatory affairs and publications	32
Figure 1: MCU1, built from 1988...1991	5
Figure 2: MCU2, built from 1991 ... 2001	5
Figure 3: MCU3, built from 1996 ... 2001	5
Figure 4: UserTerminal with MCU4.....	5
Figure 5: UserTerminal with MCU5.....	5
Figure 6: UserTerminal MCU6 and TouchScreen.....	7
Figure 7: MCU6:.....	7
Figure 8: SBC PC:.....	7
Figure 9: Example of request control on MCU 6.....	13
Figure 10: Communication example	14
Figure 11: Control states of MCU6 device without active external control	24
Figure 12: ControlAllowed	25

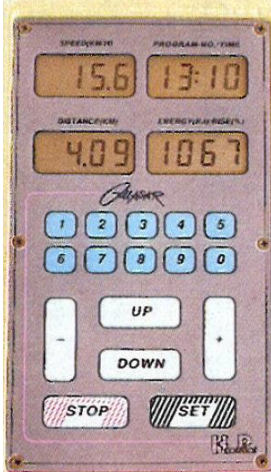








Figure 13: Example for “request control” confirmation: 31



[1] **UserTerminals and Micro-Controller-Units MCU1 up to MCU6**

The various MCU (MicroControllerUnit) generations of the h/p/cosmos devices, such as treadmills, bicycle and ladder ergometers:

		
<p>Figure 1: MCU1, built from 1988...1991 order # MCU1: MCU1 order # UserTerminal: interface: no external interface coscom: no firmware update: in factory only</p>	<p>Figure 2: MCU2, built from 1991 ... 2001 order # MCU2 PCB: cos255a0225 order # UserTerminal: cos10498 interface: RS232 COM1 coscom: v1 and v2 firmware update: via EPROM</p>	<p>Figure 3: MCU3, built from 1996 ... 2001 order # MCU3 PCB: order # UserTerminal: interface: 2 x RS232 COM1 and COM2 coscom: v2 firmware update: via RS232 upload</p>

 	 
<p>Figure 4: UserTerminal with MCU4 built from 1997 ... 2007 article # UserTerminal MCU4: cos00098110046 article # MCU4 PCB: cos25500000336 interface: 2 x RS232 COM1 and COM2 coscom: v2 and v3 firmware update: via EPROM</p>	<p>Figure 5: UserTerminal with MCU5 built from 2007 ... 2021 article # UserTerminal MCU5: cos100060 article # MCU5 PCB: cos13745-03tm interface: 4 x RS232 COM1, COM2, COM3, COM4 (option) coscom: v2 (terminated in 2019) and v3 and v4 firmware update: via RS232 upload via para control 4.1</p>

Checking the firmware version can be done either via coscom v3 or on the UserTerminal display of the treadmill (or through h/p/cosmos para control software and interface, in case there is no display on the treadmill:

1) After the machine is powered on, the display shows the Firmware version.

or

2) When activating the user OPTION 05, the display also shows the Firmware version.

	display:	shows:
	speed	HPTM (TM = treadmill), or HPLE (LE = ladder ergometer)
	time	type
	index	1.7 = example for device code in Optional settings (see nameplate)
	distance	MCU5, or MCU4
	elevation	1.06.4 (example for firmware version)
	heart rate	1.7 (default device code based on firmware, which should match the device code on the type plate of the treadmill)

For clarification a short table of available coscom versions on different MCU versions:

	MCU2	MCU 3	MCU 4	MCU 5	MCU 6
coscom v1	x	X			
coscom v2			x		
coscom v3			4.04.5 or higher	x	
coscom v4				1.08.3.0083 and higher	x

MCU4 Firmware updates are available at h/p/cosmos headquarter through EPROM replacement. From MCU5 (built from November 2007 approx.) the h/p/cosmos treadmills have been equipped then with MCU5 where the firmware can be updated via RS232 interface. Please send an email to service@hpcosmos.com with the serial number of the treadmill based on the type plate and check the installed firmware version (will also be shown on the treadmill display for a few seconds after powering on the machine) and ask for details in case of any queries.



Figure 6: UserTerminal MCU6 and TouchScreen

Figure 7: MCU6:

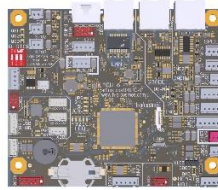


Figure 8: SBC PC:



UserTerminal with MCU6
 GUI Graphic User Interface
 Windows 10 OS
 10.1" TouchScreen
 built from 2019 ...
 article # UserTerminal MCU6: cos101000
 article # MCU6 PCB: cos101010-01
 article # SBS PC: cos101000i
 interface: 1 x RS232 COM1, NFC, RFID,
 USB, LAN, BlueTooth via USB stick,
 WiFi via USB stick
 coscom: v4 (no more other protocols!)
 firmware update: via USB memory stick

The main components of the GUI
 UserTerminal are the MCU6 sensor actor
 board and the SBC single board computer
 with Windows 10, featured by a 10.1"
 TouchScreen and number of peripheral
 devices.

[2] Overview

Note: Before starting to implement coscom v4 make sure to read chapter “Request control – fail-safe and stop state”.

h/p/cosmos coscom v4 defines an interface for basic device control. At the moment, the protocol is designed for five different device types (not all are available on the market right now):

- h/p/cosmos running machines (treadmill ergometers)
- h/p/cosmos ladder ergometers
- h/p/cosmos ergometers
- h/p/cosmos steppers
- h/p/cosmos cross trainers

The interface consists of one device which currently has one service (index 0). The service has several actions and variables with which the device can be controlled. In future, there could be an update which can add new services if necessary.



The protocol has a general request – response design. External software is always allowed to send a request but must wait for the corresponding answer before sending the next request (only one message can be pending). For active control see chapter safety considerations.

In order to get actual variable values, you can either query the latest value of a variable (so called polling) or get an automatic event message, when the variable value changes (see chapter eventing).

h/p/cosmos coscom v4 uses serial interface for communication. In order to distinguish between version 3 the baud rate is changed to 19200.

[3] **coscom® safety test confirmation and official release document**

Please note that for staying in compliance with safety related issues a quality assurance & regulatory affairs agreement is necessary. This states that a communication test including log files have to be done. For further information see official document on coscom.org. Current version can be found at:

http://www.coscom.org/coscom_v4/20210924_hpcosmos_coscom_v4_QA_RA_sample.docx

[4] **Basic message format**

h/p/cosmos coscom v4 is a UTF-8 based protocol. Every message starts with “*” followed by a character which indicates the message type:

- “*A” indicates an action request or response. Parameters are described with “*I” for input parameters followed by a parameter index and “:” as delimiter for the parameter value. Output parameters follow the same scheme but with character “O”. Example request:
*A0s0*I0:<FirstParameterValue>*I1:<SecondParameterValue>*Y0:8D*Z
- “*Q” followed by a variable index indicates a variable query request or response:
 - Request example for variable with index 0 on service index 0:
*Q0s0*Y0:4E*Z
 - Response example for a variable with index 0 on service index 0:
*Q0s0:<CurrentValue>*Y0:E2*Z
 - Querying variables which are not supported by current device type will result in an error response.
- “*E” indicates an event message. For further information see chapter “eventing”.
- “*R” is a special response message this is sent when a wrong checksum was detected. See chapter error messages for details.

After the “main” character follows the service index “s” + **index** of service. Currently there is only one service defined, so this will always be “s0”. A coscom v4 device will accept messages where no service index is defined (missing “s0”). If this is the case a default service index of 0 is assumed. A device is also allowed to send messages with missing “s0” service index.

Every h/p/cosmos coscom v4 message ends with the **checksum extension followed by “*Z”**.

The “*” character is reserved as protocol delimiter therefore any “*” in an argument or variable value must be **escaped with “*X”**. Example: If you want to send a message with “RequestControl” action which contains a “*” character, you would have to escape it:

*A3s0*I0:My own text with a *X character*Y0:09*Z

h/p/cosmos coscom v4 defines a **max. message length for incoming requests (external software to device) of 64 bytes and a max message length of 250 bytes for outgoing message**.

[5] **Checksum extension**

Every coscom v4 message must use the checksum extension. This is necessary because of RS232 support, where no data link layer exists.

request example: *A2s4*I0:2*I1:3*I2:0*Y0:73*Z

response example: *A2s4*Y0:44*Z

The calculation of the checksum is done by getting all UTF-8 bytes for the characters starting by the first '*' character of the message and ending before the message end "*Z". The bytes have to be added and computed modulo 256. The hexadecimal representation of the result is the actual checksum.

[6] Error messages

A h/p/cosmos device waits till it receives a “*Z” indicating that a whole coscom message was received. If this part of the message is disturbed the external software will run in a timeout.

If a h/p/cosmos device detects a “*Z” it parses the checksum of the received message. If no checksum is attached or an invalid checksum is detected it will send a general error response `*R1*F0:<ErrorNumber>*R1:<ErrorText>*Y0:84*Z`. The error description (“*F1:ErrorText”) is optional and can be left out.

If an h/p/cosmos device detects a wrong parameter (e. g. speed out of range) in an otherwise correct message it will send an error response message to the external software. An error message starts with the same Indices as the request but is followed by a “*F0:”, an error number, “*F1:” and an error description. An example looks like this: `*A0s0*F0:123*F1:ErrorText*Y0:38*Z`

The error description (“*F1:ErrorText”) is optional and can be left out.

[7] Eventing

For getting variable changes you can either use polling method by querying the current variable values. This is according to the general request-response design of the protocol. If you want to get automatic messages of the device, if variable values change, you can use so called eventing. This is an extension of the protocol where the device sends messages without an explicit request. You can use action “SetEventMask” to control which variables should send automatic changes (default after switching device on: all off).

RS232 does not allow for discovering connection change therefore event mask could be set to any value when you are connecting. A precursor could have set it according to his needs. Best practice is to set event mask at connecting time to your needs (if you don’t want any events, set all off.)

A service publishes changes to its variables by sending so called event messages. These messages contain the indices of one or more variables and the current value of those variables. There can be more than one value in a single event message, if more variables change at the same time.

An initial event message is sent when subscription changes by “SetEventMask”. This event message contains the indices and values for all evented variables and allows the subscriber to initialize its model of the state of the service.

Event messages are tagged with an event key, which has one digit. The event key for a subscription is initialized to 0 when the device sends the initial event message. For each subsequent event message, the device increments the event key for a subscription, and includes that updated key in the event message. Event keys handle overflow and wrap the event key from 9 back to 1 (not 0). Subscribers must also handle this special case when the next event key is not an increment of the previous key.

To repair an event subscription, e.g., if a subscriber has missed one or more event messages, a subscriber must re-subscribe by invoking “SetEventMask” again. By doing so, the subscriber will get a new initial event message, and a new event key.

Following the general event syntax (for better reading the elements are put in separate lines):

*Event keys *service index*

*Variable index: *variable value*

other variables and their values go here, if any

*Y0:xx*Z

An actual example message with event key **1** and two variable updates (Index **0** and **1**) of service **0** would look like this:

```
*E1s0*V0:<value1>*V1:<value2>*Y0:A9*Z
```

[8] Safety considerations

One goal was making h/p/cosmos coscom v4 more secure. h/p/cosmos coscom v3 has several safety features. But not all of them were mandatory. Over the last years regulations for medical devices have become more severe. In order to meet these concerns h/p/cosmos has changed some safety features and made them mandatory. Following the basic safety procedure of h/p/cosmos coscom v4 will be described.

[8A] GetDeviceInformation

In order to check if a h/p/cosmos coscom v4 device is present, you must use action “GetDeviceInformation”. You will get device type, the variant (distinguish between treadmill, ladder ergometer, bicycle and stepper), serial number and firmware version of the connected device.

[8B] Request control – fail-safe and stop state

An external device can send a h/p/cosmos coscom v4 message at any time. But before actively controlling the device by changing any load (speed, elevation, power, start or stop command) **you first must request control allowance by using action “RequestControl”**. With MCU6 devices this can be done anytime, MCU5 devices must be in mode selection state. After invoking this action, the user will see a message on the user terminal (if device hardware supports displaying text) where he must confirm external control allowance. **If he accepts, variable “ControlAllowed” will change to “Allowed” if he declines the request, “NotAllowed” will be set.** While the request is shown “RequestPending” will be set. **If it’s a device without terminal, the message will not be shown and control will be granted immediately. When implementing coscom v4 it is mandatory to consider a device where request control could be not accepted.**

You can only actively control the device when “ControlAllowed” is set. Control is then generally allowed as long as control state “stopped” or “pause” is reached or a speed value of 0 km/h is reached (proband may not expect belt to start again after stop). **This could be by pressing the stop button on the terminal, a failsafe, an error, sending action “SetSpeed” with 0 km/h or stop action on coscom v4.**

If the device supports control state “pause” external control will also be revoked and the external software would have to request control again. This “pause” state is optional and depending on the actual device. “Pause” cannot be achieved due external command. Sending the “Stop” action will set control state to “stop”.

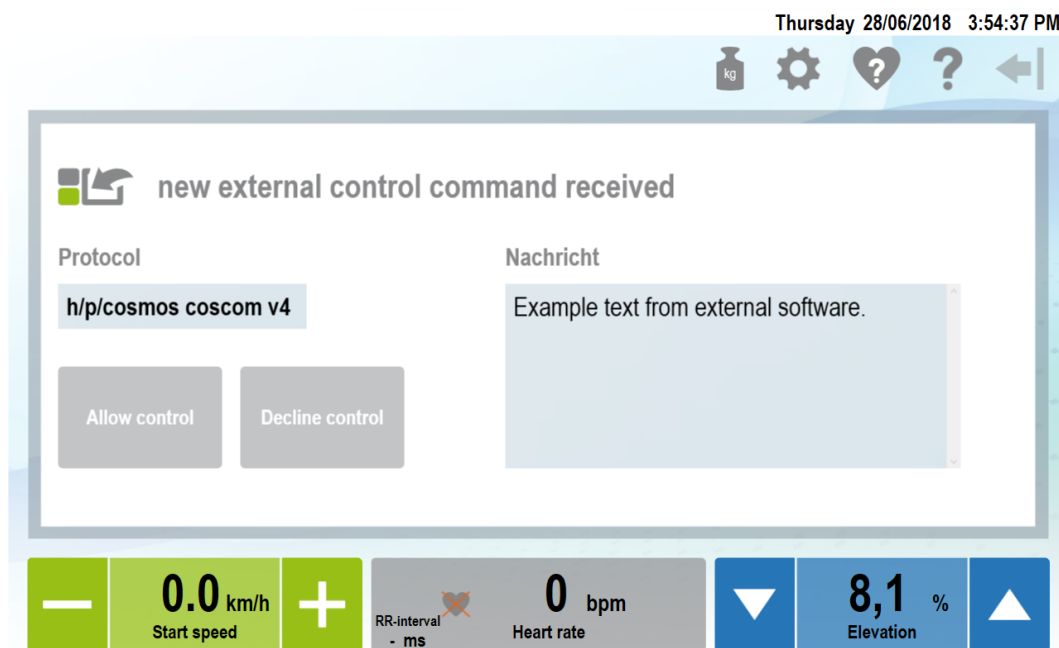


Figure 9: Example of request control on MCU 6

If variable “ControlAllowed” changes to “NotAllowed” external software must cancel current control profile. In order to start controlling again, you have to repeat requesting control.

While external control is allowed, using Failsafe for detecting communication loss is mandatory. You have to invoke action “SetFailsafe” within **e v e r y s e c o n d** while controlling the device. If the device does not receive the message within one second, the device will stop and control will be revoked. Once failsafe is activated due “SetFailSafe” every valid coscom message received by MCU will reset the current interval.

This concept ensures that a stop state of the device is “detected” (by getting an error response to an active control request) by external software even if variable “ControlState” is not monitored.

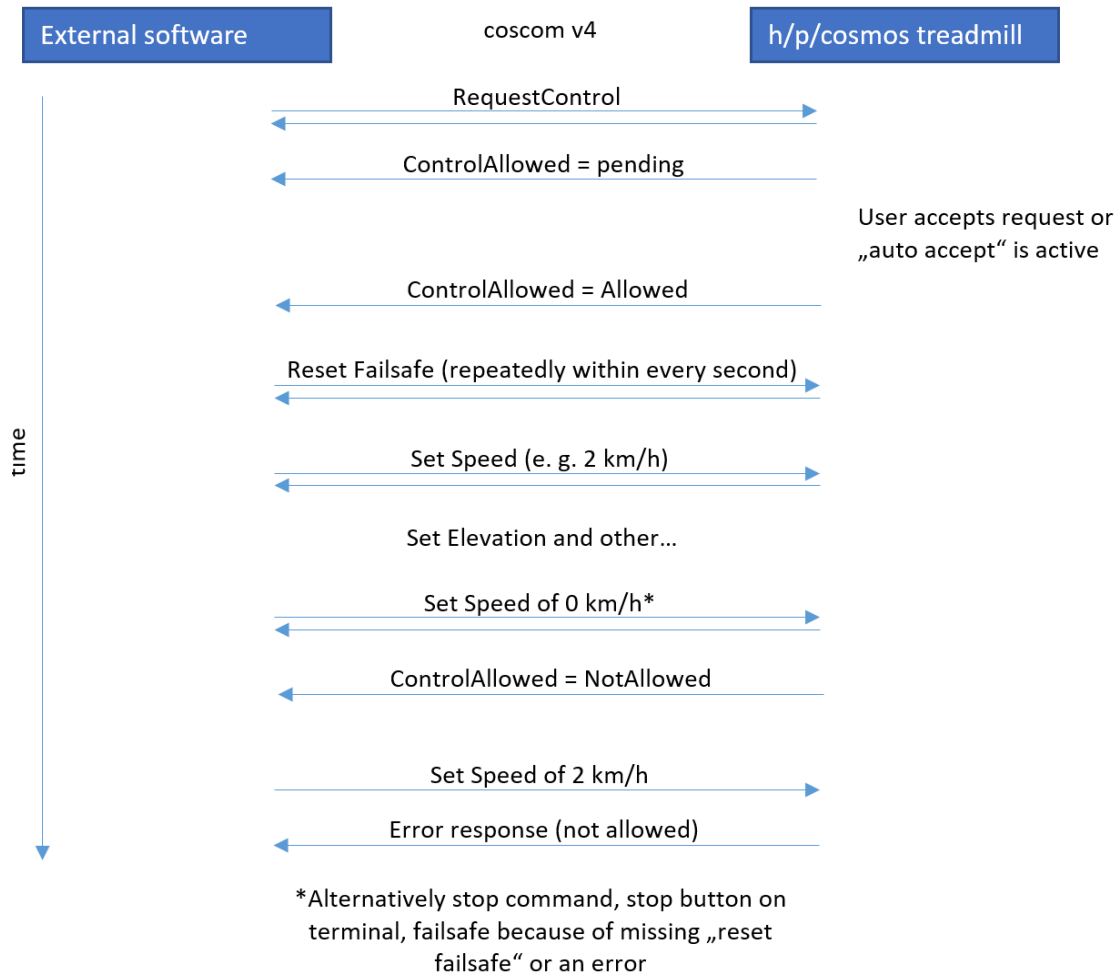


Figure 10: Communication example

For a small state chart see variable "ControlAllowed".

[9] Feature Matrix

h/p/cosmos coscom v4 is designed to meet different device types. But not all device types support all defined actions and variables. Following matrix will address this issue:

Action/Device type	Treadmill	Ergometer	Ladder	Cross trainer	Stepper
GetDeviceInformation	x	x	x	x	x
SetEventMask	x	x	x	x	x
RequestControl	x	x	x	x	x
ResetFailsafe*	x	x	x	x	x
SetSpeed*	x		x		
GetSpeedRange	x		x		
GetAccelDecelRange	x		x		
HoldSpeed*	x		x		
SetElevation*	x				
SetElevationWithSpeed*	x				
GetElevationRange	x				
HoldElevation*	x				
SetPower*		x		x	x
SetTorque*		x		x	x
SetCadence*		x		x	
Start*	x	x	x	x	x
Stop*	x	x	x	x	x
SetPersonData*	x	x	x	x	x
GetPersonData	x	x	x	x	x
ResetCounterValues*	x	x	x	x	x
Beep*	x	x	x	x	x

* Using this action without external control permission will result in an error response (see chapter "Safety considerations").

h/p/cosmos – coscom v4 Basic Remote Service

Variable/Device type	Treadmill	Ergometer	Ladder	Cross trainer	Stepper
ControlStatus (Index: 0)	X	X	X	X	X
ControlAllowed (Index: 1)	X	X	X	X	X
ActualSpeed (Index: 2)	X	X		X	
TargetSpeed (Index: 3)	X	X		X	
ActualElevation (Index: 4)	X				
TargetElevation (Index: 5)	X				
ActualPower (Index: 6)	X	X	X	X	X
TargetPower (Index: 7)		X		X	X
ActualTorque (Index: 18)		X		X	
TargetTorque (Index: 19)		X		X	
EnergyConsumption (Index: 8)	X	X	X	X	X
MET (Index: 9)	X	X	X	X	X
Time (Index: 10)	X	X	X	X	X
Distance (Index: 11)	X	X	X	X	
ActualCadence (Index: 12)		X		X	
TargetCadence (Index: 21)		X		X	
Height (Index: 13)	X		X		X
HeartRate (Index: 14)	X	X	X	X	X
RRInterval (Index: 15)	X	X	X	X	X
Errors (Index: 16)	X	X	X	X	X
StepHeight (Index: 20)			X		X

[10] Actions

Following you will find a short description with syntax sample of every coscom v4 action of basic remote service.

Note: If no other description is given, values are defined as floating point values expected with max. six decimal places and maximal value +/- 1.000.000. Integer values are defined as signed 32-bit values. String values max.

[10A] GetDeviceInformation

(Action index: 0) Gets basic device information for detecting if a h/p/cosmos coscom v4 device is available.

Parameters:

- *DeviceType* (direction out - index 0, max. length: 64 characters):
e. g. urn:schemas-coscom-org:device:LadderErgometer:1
If returned device type is "urn:schemas-coscom-org:device:MCU5coscomV4:1" restrictions described in section "MCU5 legacy device" apply.
- *Variant* (direction out- index 1, digit): Number that indicates the actual variant type.
Possible Values:
 - o 0 = Treadmill Ergometer
 - o 1 = Ladder
 - o 2 = Cross trainer
 - o 3 = Stepper
 - o 4 = Bicycle Ergometer
- *Serial Number* (direction out – index 2, max. length: 50 characters): serial number string
- *FirmwareVersion* (direction out – index 3, max. length: 11 characters): Current firmware version

Syntax sample request: *A0s0*Y0:3E*Z

Syntax sample response: *A0s0*00:urn:schemas-coscom-org:device:MCU6coscomV4:1*01:1*02:cos30007-01va06-0003*03:1.0.0001*Y0:8A*Z

[10B] SetEventMask

(Action index: 1) As described in chapter “eventing” with this method it is possible to enable or disable automatic value change transmission of the device. After switching on the device all events are disabled. Changing the event mask will lead to new initial events and new event index in the event messages (see chapter “eventing”).

Parameters

- *EventMask* (direction in – index 0): a string consisting of 0 and 1 indicating if eventing for specific variables should be turned on. The position in the string determines the variable index. For example, the string 100101 enables eventing for variables with indices 0, 2 and 5. Leading 0 can be left out. The string starts with the highest variable index and ends with index 0. For variable indices see chapter variables. For variable indices which are not supported in the current device type changes to event mask will have no effect.

Syntax sample request: *A1s0*I0:1001*Y0:DE*Z

Syntax sample response: *A1s0*Y0:3F*Z

[10C] RequestControl

(Action index: 2) With this action external control can be requested. It must be done before actively controlling the device. For further information on controlling the device see chapter “Safety considerations”. With MCU6 this action can be invoked anytime. MCU5 devices must be in selection or pause state. Otherwise MCU5 will send an error response. If device is not configured to auto accept requests the external control request is shown to the user which has 10 seconds to accept or decline the request. After 10 seconds the request will automatically be declined. The state can be monitored with ControlAllowed variable.

Parameters

- *Message* (direction in – index 0, max. length: 45 characters): a string which will be shown to the user when he should accept external control. Because of different hardware types it is not guaranteed that the message is shown to the user. If no message should be shown, enter an empty string (request: *A2s0*I0:*Y0:1D*Z)

Syntax sample request: *A2s0*I0:external software name wants to control*Y0:3D*Z

Syntax sample response: *A2s0*Y0:40*Z

[10D] ResetFailsafe

(Action index: 3) This action **must** be invoked regularly within 1 second while external control is allowed. For more information see chapter “Safety considerations”. If the action is invoked when controlling is not allowed an error response will be sent back from the device (see chapter “error messages”). Failsafe interval will also be reset when MCU is receiving a valid (valid checksum) coscom message.

Parameters

No parameters defined

Syntax sample request: *A3s0*Y0:41*Z

Syntax sample response: *A3s0*Y0:41*Z

[10E] SetSpeed

(Action index: 4) With this action you can set a new speed with given acceleration. Using this action without external control permission will result in an error response (**see chapter “Request control – fail-safe and stop state”**). If speed or acceleration parameter is out of range, an error response will be sent.

Parameters

- *Speed* (direction in - index 0): The new target speed in m/s.
- *Acceleration* (direction in – index 1): The acceleration to be used with this command in m/s².

Syntax sample request (speed: 1.3 m/s, acceleration 0.2 m/s²):

*A4s0*I0:1.30*I1:0.20*Y0:7F*Z

Syntax sample response: *A4s0*Y0:42*Z

[10F] GetSpeedRange

(Action index: 5) Returns the current speed range of the device. The range can vary from its base value if it is additionally limited in the option settings of the device.

Parameters

- *MinimalSpeed* (direction out - index 0): Current minimal speed in m/s.
- *MaximalSpeed* (direction out – index 1): Current maximal speed in m/s.

Syntax sample request: *A5s0*Y0:43*Z

Syntax sample response (min 0 m/s, max 6.11 m/s): *A5s0*O0:0.00*O1:6.11*Y0:8E*Z

[10G] GetAccelDecelRange

(Action index: 6) Returns the current acceleration/deceleration range of the device. The range can vary from its base value if it is additionally limited in the option settings of the device.

Parameters

- *MinAcceleration* (direction out - index 0): Current minimal acceleration/deceleration in m/s².
- *MaxAcceleration* (direction out – index 1): Current maximal acceleration/deceleration in m/s².

Syntax sample request: *A6s0*Y0:44*Z

Syntax sample response (min 0.1 m/s², max: 0.6 m/s²): *A6s0*O0:0.10*O1:0.60*Y0:8E*Z

[10H] HoldSpeed

(Action index: 7) Can be used to hold the current speed at a constant level. Using this action without external control permission will result in an error response (see chapter “Safety considerations”).

Parameters

No parameters defined

Syntax sample request: *A7s0*Y0:45*Z

Syntax sample response: *A7s0*Y0:45*Z

[10I] SetElevation

(Action index: 8) With this action you can set a new elevation. Using this action without external control permission will result in an error response (see chapter “Request control – fail-safe and stop state”). If elevation parameter is out of range, an error response will be sent.

Parameters

- *Elevation* (direction in - index 0): The new target elevation in %.

Syntax sample request (elevation: 3.3 %): *A8s0*I0:3.30*Y0:E7*Z

Syntax sample response: *A8s0*Y0:46*Z

[10J] SetElevationWithSpeed

(Action index: 18) With this action you can set a new elevation with optional elevation speed. Using this action without external control permission will result in an error response (see chapter “Request control – fail-safe and stop state”). If elevation parameter is out of range, an error response will be sent.

Parameters

- *Elevation* (direction in - index 0): The new target elevation in %.
- *ElevationSpeed* (direction in – index 1): The elevation speed to be used with this command in °/s. If the device does not support elevation speed, this parameter will be ignored. To use the default elevation speed, set this parameter to 0.

Syntax sample request (elevation: 3.3 %, speed: default):

*A18s0*I0:3.30*I1:0*Y0:26*Z

Syntax sample response: *A18s0*Y0:77*Z

[10K] GetElevationRange

(Action index: 9) Returns the current elevation range of the device. The range can vary from its base value if it is additionally limited in the option settings of the device.

Parameters

- *MinimalElevation* (direction out - index 0): Current minimal elevation in %.
- *MaximalElevation* (direction out – index 1): Current maximal elevation in %.

Syntax sample request: *A9s0*Y0:47*Z

Syntax sample response (min: 0 %, max: 22 %): *A9s0*O0:0.00*O1:22.00*Y0:BE*Z

[10L] HoldElevation

(Action index: 10) Can be used to hold the current elevation at a constant level. Using this action without external control permission will result in an error response (see chapter “Request control – fail-safe and stop state”).

Parameters

No parameters defined

Syntax sample request: *A10s0*Y0:6F*Z

Syntax sample response: *A10s0*Y0:6F*Z

[10M] SetPower

(Action index: 11) Can be used to set a new target power. Using this action without external control permission will result in an error response (see chapter “Request control – fail-safe and stop state”).

Parameters

- *Power* (direction in - index 0, integer): New target power in watts.

Syntax sample request: *A11s0*I0:50*Y0:B2*Z

Syntax sample response: *A11s0*Y0:70*Z

[10N] SetTorque

(Action index: 16) Can be used to set a new target torque. Using this action without external control permission will result in an error response (see chapter “Request control – fail-safe and stop state”).

Parameters

- *Torque* (direction in - index 0): New target torque in nm.

Syntax sample request: *A16s0*I0:6.50*Y0:1B*Z

Syntax sample response: *A16s0*Y0:75*Z

[10O] SetCadence

(Action index: 17) Can be used to set a new target cadence. Using this action without external control permission will result in an error response (see chapter “Request control – fail-safe and stop state”).

Parameters

- *Cadence* (direction in - index 0, integer): New target cadence in rpm.

Syntax sample request: *A17s0*I0:80*Y0:BB*Z

Syntax sample response: *A17s0*Y0:76*Z

[10P] Start

(Action index: 12) Starts external control mode. Using this action without external control permission will result in an error response (see chapter “Safety considerations”). In order to start external control after getting permission you can either set a new target value (speed, elevation or power) or use this action to only switch or start the mode and not changing current target values. This can be helpful if you want to switch from a running device mode (e. g. cardio) to external control without setting a new target right now.

Parameters

No parameters defined

Syntax sample request: *A12s0*Y0:71*Z

Syntax sample response: *A12s0*Y0:71*Z

[10Q] Stop

(Action index: 13) Stops external control mode and the device. Using this action without external control permission will result in an error response (**see chapter “Request control – fail-safe and stop state”**). “ControlAllowed” will be revoked after using this action.

Parameters

No parameters defined

Syntax sample request: *A13s0*Y0:72*Z

Syntax sample response: *A13s0*Y0:72*Z

[10R] SetPersonData

(Action index: 14) Sets the current person data of the individual that is using the device. These values will affect energy consumption calculation and cardio default values. Using this action without external control permission will result in an error response (**see chapter “Request control – fail-safe and stop state”**).

Parameters

- *Gender* (direction in - index 0): ‘F’ = Female, ‘M’ = Male.
- *Age* (direction in - index 1, integer): age in years (1-150)
- *Height* (direction in - index 2, integer): 1 – 300 cm
- *Weight* (direction in – index 3): 1-300 kg

Syntax sample request (male, 26 years, 176 cm, 73 kg):

*A14s0*I0:M*I1:26*I2:176*I3:73*Y0:AA*Z

Syntax sample response: *A14s0*Y0:73*Z

[10S] GetPersonData

(Action index: 20) Gets the current person data of the individual that is using the device.

Parameters

- *Gender* (direction out - index 0): ‘F’ = Female, ‘M’ = Male.
- *Age* (direction out - index 1, integer): age in years (1-150)
- *Height* (direction out - index 2, integer): 1 – 300 cm
- *Weight* (direction out – index 3): 1-300 kg

Syntax sample request: *A20s0*Y0:70*Z

Syntax sample response (male, 26 years, 176 cm, 73 kg):

*A20s0*O0:M*O1:26*O2:176*O3:73*Y0:BF*Z

[10T] ResetCounterValues

(Action index: 15) Resets current parameters like time, distance, energy consumption, height. After using this action these parameters will be set to 0 but continue counting. Using this action without external control permission will result in an error response (**see chapter “Request control – fail-safe and stop state”**).

Parameters

No parameters defined

Syntax sample request: *A15s0*Y0:74*Z

Syntax sample response: *A15s0*Y0:74*Z

[10U] **Beep**

(Action index: 19) Gives external software a change to acoustical warn the user of load changes. You should use this action in order to warn users before changing any load. Using this action without external control permission will result in an error response (see chapter “Request control – fail-safe and stop state”).

Parameters

- Duration (direction in – index 0, integer): Beep time in 1/100 seconds (0 to 2.55 s).

Syntax sample request: *A19s0*I0:100*Y0:E6*Z

Syntax sample response: *A19s0*Y0:78*Z

[11] Variables

h/p/cosmos coscom v4 defines one service with following variables:

Note: If no other description is given, values are defined as floating point values expected with max. two decimal places and maximal value +/- 1.000.000. Integer values are defined as signed 32-bit values. String values max.

[11A] ControlStatus

(Variable index: 0) Independent from which mode (Quickstart, Profile, Cardio, Extern, Test) is running this variable indicates the current control state. Possible values are:

- 0 = Stop (device is somewhere in menu)
- 1 = EmergencyStop
- 2 = Run
- 3 = Pause

Pause is defined as running belt and time counting is stopped. This can be achieved following:

- MCU5: Pressing the "-" button or setting speed to 0 km/h till running belt is stopped in all modes except stepper profile, test profile mode and external control over coscom v4.
- MCU6: Pressing the "Stop" button while in running mode. This will switch in the summary screen which is interpreted as a pause before control is finally stopped or continued.

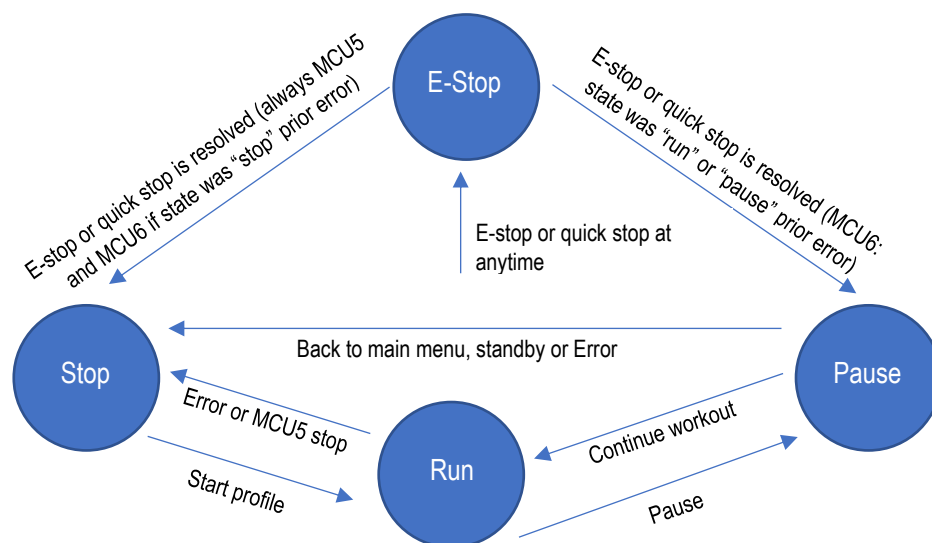


Figure 11: Control states of MCU6 device without active external control

Syntax sample query request: *Q0s0*Y0:4E*Z

Syntax sample query response (Run state): *Q0s0:1*Y0:B9*Z

[11B] **ControlAllowed**

(Variable index: 1) Value that indicates if external control is allowed right now. Possible values are:

- **0 = Allowed** (control can be done by external software)
- **1 = RequestPending** (User has yet to decide if external software is allowed)
- **2 = NotAllowed** (control is not allowed)

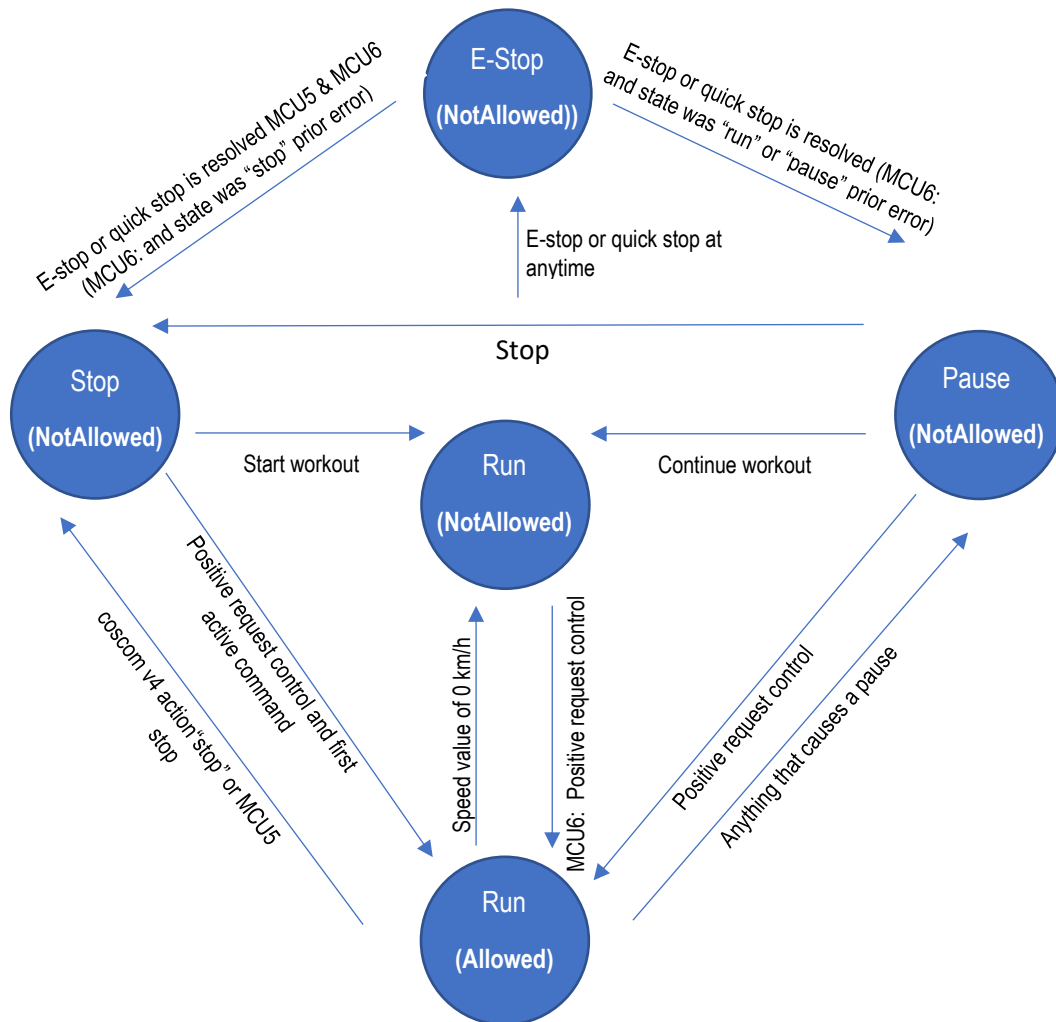


Figure 12: ControlAllowed

Syntax sample query request: *Q1s0*Y0:4F*Z

Syntax sample query response (request pending): *Q1s0:1*Y0:BA*Z

[11C] **ActualSpeed**

(Variable index: 2) Gets the current speed value in m/s.

Syntax sample query request: *Q2s0*Y0:50*Z

Syntax sample query response: *Q2s0:2.10*Y0:4B*Z

[11D] TargetSpeed

(Variable index: 3) Gets the target speed value in m/s.

Syntax sample query request: *Q3s0*Y0:51*Z

Syntax sample query response: *Q3s0:3.50*Y0:51*Z

[11E] ActualElevation

(Variable index: 4) Gets the current elevation value in %.

Syntax sample query request: *Q4s0*Y0:52*Z

Syntax sample query response: *Q4s0:3.50*Y0:52*Z

[11F] TargetElevation

(Variable index: 5) Gets the target elevation value in %.

Syntax sample query request: *Q5s0*Y0:53*Z

Syntax sample query response: *Q5s0:5.20*Y0:52*Z

[11G] ActualPower

(Variable index: 6, integer) Gets the current power value in watts.

Syntax sample query request: *Q6s0*Y0:54*Z

Syntax sample query response: *Q6s0:125*Y0:26*Z

[11H] TargetPower

(Variable index: 7, integer) Gets the target power value in watts.

Syntax sample query request: *Q7s0*Y0:55*Z

Syntax sample query response: *Q7s0:175*Y0:2C*Z

[11I] ActualTorque

(Variable index: 18) Gets the current torque value in nm.

Syntax sample query request: *Q18s0*Y0:87*Z

Syntax sample query response: *Q18s0:6.30*Y0:88*Z

[11J] TargetTorque

(Variable index: 19) Gets the target torque value in nm.

Syntax sample query request: *Q19s0*Y0:88*Z

Syntax sample query response: *Q19s0:6.50*Y0:8B*Z

[11K] EnergyConsumption

(Variable index: 8) Gets the energy consumption of this workout in kj.

Syntax sample query request: *Q8s0*Y0:56*Z

Syntax sample query response: *Q8s0:213.23*Y0:B9*Z

[11L] MET

(Variable index: 9) Gets the current MET (metabolic equivalent) value of this workout.

Syntax sample query request: *Q9s0*Y0:57*Z

Syntax sample query response: *Q9s0:85*Y0:FE*Z

[11M] Time

(Variable index: 10, integer) Gets the current workout time in seconds.

Syntax sample query request: *Q10s0*Y0:7F*Z

Syntax sample query response: *Q10s0:600*Y0:4F*Z

[11N] Distance

(Variable index: 11) Gets the current distance value of this workout in meters.

Syntax sample query request: *Q11s0*Y0:80*Z

Syntax sample query response: *Q11s0:10.25*Y0:B0*Z

[11O] ActualCadence

(Variable index: 12, integer) Gets the current rotation frequency (RPM = rounds per minute).

Syntax sample query request: *Q12s0*Y0:81*Z

Syntax sample query response: *Q12s0:80*Y0:23*Z

[11P] Height

(Variable index: 13) Gets the current positive altitude difference in meters which has been gathered in this workout. In case of treadmill a negative value can be achieved if running direction is changed to backwards running.

Syntax sample query request: *Q13s0*Y0:82*Z

Syntax sample query response: *Q13s0:235*Y0:56*Z

[11Q] HeartRate

(Variable index: 14, integer) Gets the current heart rate value of the test person. If no heart rate is detected value will be 0.

Syntax sample query request: *Q14s0*Y0:83*Z

Syntax sample query response: *Q14s0:140*Y0:52*Z

[11R] RRInterval

(Variable index: 15, integer) Gets the latest RR-interval (beat-to-beat interval of the heart rate). This variable should be monitored using events in order to get all value changes. If RR-interval is not known (not supported or no heart rate available) the value will be 0.

Syntax sample query request: *Q15s0*Y0:84*Z

Syntax sample query response: *Q15s0:862*Y0:5E*Z

[11S] Errors

(Variable index: 16, semicolon separated list of errors) Gets the current error and service notes values of the device. If no error or service note is active, string will be empty. Errors start with “E” followed by three digits. Service notes start with “S” again followed by three digits e .g “E153” or “S102”. Errors are defined in the user manual of the device.

Syntax sample query request: *Q16s0*Y0:85*Z

Syntax sample query response (errors 100 and 303): *Q16s0:E100;E303*Y0:AB*Z

[11T] StepHeight

(Variable index: 20) Gets the current step height in mm.

Syntax sample query request: *Q20s0*Y0:80*Z

Syntax sample query response: *Q20s0:203*Y0:4F*Z

[11U] TargetCadence

(Variable index: 21, integer) Gets the target rotation frequency (RPM = rounds per minute).

Syntax sample query request: *Q21s0*Y0:81*Z

Syntax sample query response: *Q21s0:80*Y0:23*Z

[12] Error Codes

coscom v4 defines following error codes:

Code	Description
111	Internal error prevents external command (like no connection to Frequency inverter)
112	Existing error prevents external command (device has some active error, see device manual for possible errors)
123	Invalid Protocol parameter (e. g. missing parameter in action message)
133	External command is not allowed. See chapter Request control for further information
134	Elevation system is not referenced yet
950	Wrong or missing checksum
999	Function not supported by current device. This could happen when using a function not supported for this device type (see chapter feature matrix).

[13] **MCU5 legacy device**

h/p/cosmos introduced coscom v4 with the MCU6 device family in 2018. Older devices with MCU5 can be updated (**firmware version 1.08.3.0083 and higher**) to use coscom v4 with some small limitations. As MCU5 devices do have some display limitations it is not possible to show user specific message when requesting control. Additional MCU5 devices will behave a little different regarding control status (see variable) and request control (see action).

[14] **MCU5 coscom v4 Implementation Notes**

This section of the document describes the implementation of the coscom v4 in the MCU 5 firmware. The MCU 5 firmware implements only the device type “Treadmill” in the current version (1.08.3.0083 and higher).

Communication settings

The coscom v4 protocol uses a serial link according the RS-232 standard (19200, 8, n, 1). The MCU 5 makes the coscom v4 protocol available on port COM1 with the setting 24 in option 20:

[24] [COSC][OM 4]

How to access to user options of MCU 5?

All User Options of MCU5 can be found in the [IFU Operation and Service Manual](#):

https://www.hpcosmos.com/sites/default/files/uploads/documents/manuals/20161130_cos14310m5-v1.08hpc-en_instructions_for_use_h-p-cosmos_treadmills.pdf

section 5.11: Optional settings: User Options, pages 76 ... 82.

Manual for para control 4.1 software:

https://www.hpcosmos.com/sites/default/files/uploads/documents/20110711_cos10071-v4.0man-en_manual_h-p-cosmos_para_control_4.0_1.pdf

Control requester

The coscom v4 specification defines a procedure and the action “RequestControl” to get the allowance to control the treadmill.

This is a special additional safety feature in order to re-confirm on the keyboard of the UserTerminal, that the patient or subject is ready now and that the running belt may start now. This procedure shall avoid that the treadmill belt will start (initiated by a command from external device like PC, ECG, metabolic cart, etc.) while the patient or subject is not ready yet.

The action “RequestControl” has the argument “Message”, which can be displayed to retrieve the control decision from the user. The MCU 5 firmware ignores this argument and always displays the following message:

	<p>[PrES][S St][Art] [For][Ext.][Ctrl] meaning. “press start for external control” If this message is not answered by a key press within 10 seconds, then the message disappears and control requests are not allowed. The same happens, if a key is pressed other than the Start key. After the confirmation with the Start key and before the first control command the display shows the following text:</p>
	<p>[WAIt][][] [For][Ext.][Ctrl] After the control command “Start” or “SetSpeed” the text disappears and the device enters the manual mode. The event variable “ControlAllowed” notifies the external device about the control allowance status. The MCU 5 firmware uses the values “Allowed”, “ControlAllowed” and “NotAllowed”. The value “TemporaryNotAllowed” is not possible with the MCU 5 firmware, because there is no applicable state in the MCU 5 user interface model.</p>

Devices without UserTerminal (treadmill variant LT, which have no keyboard and no display):

There is a special treadmill variant (LT) without a display head and without keyboard (UserTerminal). This treadmill can only be operated and controlled via a remote interface connection to a PC, ECG or something similar.

With this configuration it would not be possible to confirm an external control request with a key, because there are no displays and no keys on such treadmills.

Therefore a special setting to “**auto-confirm**” this request is necessary:

MCU5 treadmill:

Admin-Option 15 of the treadmill:

- 0 = Confirmation with key “Start”
- 1 = Auto- Confirmation (LT variant, without UserTerminal = without display and keyboard)

How to access the admin options of MCU 5?

Ask h/p/cosmos service department: service@hpcosmos.com

All Administrator Options of MCU5 can be found in the [IFU Operation and Service Manual](https://www.hpcosmos.com/sites/default/files/uploads/documents/manuals/20161130_cos14310m5-v1.08hpc-en_instructions_for_use_h-p-cosmos_treadmills.pdf):
https://www.hpcosmos.com/sites/default/files/uploads/documents/manuals/20161130_cos14310m5-v1.08hpc-en_instructions_for_use_h-p-cosmos_treadmills.pdf
 section 10: Optional settings: administrator options, pages 148 ... 158.

MCU6 treadmill:

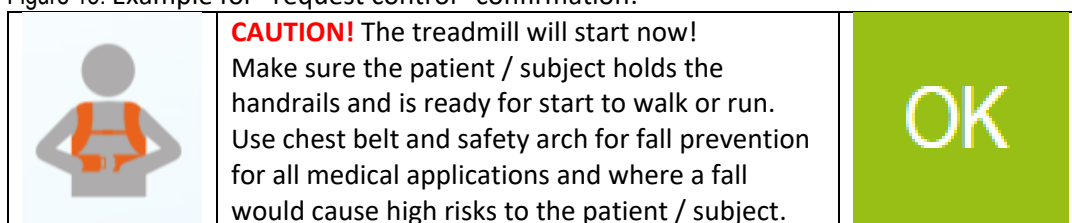
If manufacturer option “311 - Equipment Display” is set to “no” request control will immediately be allowed without confirmation of the user

Safety and Validation

For treadmills without UserTerminal or for configurations where the “auto-confirm” setting (Admin OP 15 parameter 1) is activated, the host device manufacturer (ECG, CPET, PC-software, etc.) has to manage the risks to avoid unexpected starts and dangerous situations by means of appropriate and validated procedures.

Such a procedure could be an additional warning, request and confirmation in the host control software.

Figure 13: Example for “request control” confirmation:



Next to the required technical tests and validation a quality assurance and regulatory affairs agreement shall be signed and implemented between the manufacturers of the treadmill and host devices such as ECG, CPET, PC-Software, etc. in order to be in compliance with MDD, MDR, Risk Management ISO 14971 and EN 62304 Software Lifecycle Processes. Example:

http://www.coscom.org/coscom_v4/20190409_cos100115-v4_hpcosmos_coscom_v4_quality_assurance_agreement_regulatory_affairs_en62304_en14971_sample.pdf

Pause / Run and stopped belt

There are two different states in the MCU 5 firmware with a stopped belt:

1. The belt is stopped, the display shows [PAUS] and the time is frozen.
coscom v4 ControlStatus = 3 = Pause
2. The belt is stopped, the display shows [0.0] and the time is running.
coscom v4 ControlStatus = 2 = Run

Without coscom v4 control

If the speed is decreased to the value 0 either by pressing the key MINUS, another control task or an external communication protocol command, then

Case 1. (Pause) happens in the following situations:

- Manual, Profile or Cardio mode is active
- Test mode is active and test is not covered by case 2.

Case 2. (Run) happens in the following situations:

- Test profile Stepper
- Other test profiles except user test profiles Bruce, Naughton, Balke, Ellestad and test profiles 70 and higher

With coscom v4 control

If the value of the status variable ControlAllowed is “Allowed” only case 2 happens independent of the reason how the speed is set to the value 0. At the same time the control status changes from “Allowed” to “NotAllowed”.

The control status can be changed back to “Allowed” if a new “RequestControl” is sent.

Important: the control status can only be changed back to “Allowed” while the belt is stopped!

Anomalies

Some actions and variables are not fully implemented as the specification defines. These are listed here:

Action SetElevationWithSpeed

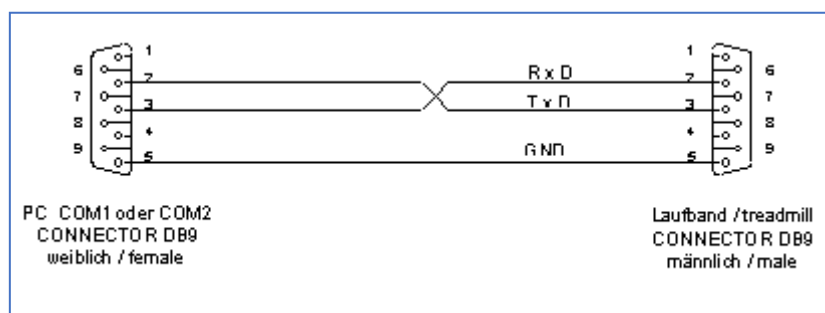
The action ignores the argument “ElevationSpeed”, because the MCU 5 hardware cannot control the speed of the elevation mechanism. Otherwise the behaviour of the action is like the action “SetElevation”.

Variable Height

The variable “Height” is not available in the MCU 5 firmware version, because it would be generating a lot of computation load for an 8-bit microcontroller (integral, sine...).

[15] **Interface cable**

In order to connect your pc to a MCU 5 running machine you must use an interface cable which is wired like in following picture:



(h/p/cosmos order # cos00097010034)

For further information visit <https://www.hpcosmos.com/en/products/supplies-options/interface-connection-cable-rs232-5m>

USB RS232 converter / adapter:

If the PC / Laptop computer has no RS232 interface, use a compatible [USB-RS232 converter](#) (h/p/cosmos order # cos12769-01)

<https://www.hpcosmos.com/en/products/supplies-options/usb-rs232-interface-adapter>

[16] **Extending h/p/cosmos coscom v4**

If you want to extend coscom v4 with vendor specific extensions (new actions or variables) this must be placed in an extra service. In order to avoid collisions, the indices are assigned by h/p/cosmos. Please contact: andreas.feil@hpcosmos.com

[17] **Updates, downloads, simulators, regulatory affairs and publications**

See website: <http://www.coscom.org>

Quality Assurance Agreements and Regulatory Affairs Agreements must be agreed among all parties involved.

As h/p/cosmos at service@hpcosmos.com for a single page draft agreement.

© Copyright 2020 h/p/cosmos sports & medical gmbh

E & OE.

Errors and Omissions Excepted.

Subject to alterations without prior notice.

Attachment:

How to access to admin options of MCU 5?

Ask h/p/cosmos service department: service@hpcosmos.com

- a) Download h/p/cosmos [para control 4.1 PC software](https://www.hpcosmos.com/sites/default/files/uploads/documents/20190124_hpcosmos_para_control_4_1_full_setup_en.zip) and install on an PC or Laptop:
https://www.hpcosmos.com/sites/default/files/uploads/documents/20190124_hpcosmos_para_control_4_1_full_setup_en.zip
- b) Connect the PC or Laptop computer to COM 3 (service port) of the h/p/cosmos treadmill via [RS232 interface cable](#) (h/p/cosmos order # cos00097010034)



If the PC / Laptop computer has no RS232 interface, use a compatible [USB-RS232 converter](#) (h/p/cosmos order # cos12769-01)

USB - RS232 converter must have Chipset FTDI / FT232RL and Full Duplex Interface!
<https://www.hpcosmos.com/en/products/supplies-options/usb-rs232-interface-adapter>

- c) Enter “access code” for admin options:
To get access to the administrator options the buttons „UP“ and „DOWN“ have to be pressed and hold while then pressing the „STOP“-button 4 times in a row.

press and hold the keys (F5) and (F6) and then simultaneously 4 times in a row (F8)

A1 -> Selection of admin-options

! -> The propagation of the access code to a third person is forbidden.

! -> Initial state: Device is switched on, one of the mode displays (manual, profile, cardio, test) is flashing.

No. #	Action#	Key strokes#	Response / display#
1st	Select mode options#	and simultaneously and simultaneously four times in a row#	Display reports flashing OP 01.#
2nd	Select option numbers#	or	Display reports flashing OP 01 to OP99.#
3rd	Confirm option numbers#		Read, confirm and set options according to the following option list. All adjustable values are going to be shown flashing. All non-adjustable values are not going to be shown flashing. Adjust the value with or Confirm value with
4th	Quit option mode#		Device stands in standby mode. One of the mode displays (manual, profile, cardio, test) is flashing.#

All Administrator Options of MCU5 can be found in the [IFU Operation and Service Manual](#):
https://www.hpcosmos.com/sites/default/files/uploads/documents/manuals/20161130_cos14310m5-v1.08hpc-en_instructions_for_use_h-p-cosmos_treadmills.pdf
section 10: Optional settings: administrator options, pages 148 ... 158.

Manual for para control 4.1 software:
https://www.hpcosmos.com/sites/default/files/uploads/documents/20110711_cos10071-v4.0man-en_manual_h-p-cosmos_para_control_4_0_1.pdf

Video instructions for admin options can be downloaded here:
<https://cloud.hpcosmos.com/index.php/s/yF7C4MY9w4Nkzmk>
<https://cloud.hpcosmos.com/index.php/s/MK2biYaREQX27bt>

Warning! The administrator options are only accessible by h/p/cosmos staff and authorized service engineers. Changing an administrator option might cause serious problems if you are not familiar with all the details. Therefore, the h/p/cosmos service has to be contacted before doing any changes in the administrator options.

Forwarding the access code to unauthorized persons is prohibited.



🇬🇧 Comparison of some interface protocol features, performance and safety standard.

🇩🇪 Schnittstellenprotokoll-Vergleich einiger Funktionen, Leistungsdaten und Sicherheitsstandards.

features and functions	h/p/cosmos® coscom® v3	h/p/cosmos® coscom® v4	Trackmaster (TMX 425, 28/03/2003)
baudrate	9600 or 115200 bps <i>9600 oder 115200 bps</i>	19200 bps <i>19200 bps</i>	4800 bps <i>4800 bps</i>
Encoding <i>Zeichencodierung</i>	UTF-8 <i>UTF-8</i>	UTF-8 <i>UTF-8</i>	Mixture of binary and ASCII <i>Mischung aus binär und ASCII</i>
message length	Variable, but longer than Trackmaster, since more parameters are possible in one message.	Variable, but longer than Trackmaster, since more parameters are possible in one message.	Variable, but max. 5 bytes. Limitation to functional code and one parameter.
Nachrichtenlänge	<i>Variabel aber länger als Trackmaster, da mehrere Parameter in einer Nachricht möglich sind.</i>	<i>Variabel aber länger als Trackmaster, da mehrere Parameter in einer Nachricht möglich sind.</i>	<i>Variabel aber max. 5 Bytes. Beschränkung auf Funktionscode und einen Parameter.</i>
scope of functions	Great scope of functions (speed and elevation control, acceleration levels, failsafe, heart rate, optional functions, profiles, displays, beeper, etc.)	Reduced but more clearly structured scope of functions compared to coscom v3 (speed and elevation control, acceleration levels, failsafe, heart rate, beeper, etc.). Also supports other types like bicycle ergometers.	Basically speed and elevation control and failsafe. A few other commands exist, but are not executed, at least at the TMX 425 treadmill model.
Funktionsumfang	<i>Großer Funktionsumfang (Geschwindigkeits- und Steigungsverstellung, Beschleunigungsstufen, Failsafe, Herzfrequenz, Optionen, Profile, Displays, Beeper, usw...)</i>	<i>Reduzierter aber übersichtlicherer Funktionsumfang (Geschwindigkeits- und Steigungsverstellung, Beschleunigungsstufen, Failsafe, Herzfrequenz, Beeper, usw...). Unterstützt auch andere Typen wie Fahrradergometer</i>	<i>Im Wesentlichen Speed und Elevation Control und Failsafe. Ein paar andere Befehle existieren, werden aber nicht ausgeführt -zumindest bei TMX 425 Laufband.</i>
resolution for elevation	can be set to 0.1 % resolution	can be set to 0.1 % resolution	can be set to 0.5 % resolution
Auflösung Steigungswinkel	<i>auf 0.1 % genau</i>	<i>auf 0.1 % genau</i>	<i>auf 0.5 % genau</i>
Messages	Device sends status changes on request.	Device sends status changes on request.	Status changes always have to be requested (polling).
Benachrichtigungen	<i>Geräte verschickt auf Wunsch Statusänderungen.</i>	<i>Geräte verschickt auf Wunsch Statusänderungen.</i>	Statusänderungen müssen immer abgefragt (gepollt) werden.
Acknowledgements	Positive and negative (error messages)	Positive and negative (error messages)	No negative replies (error messages); only positive acknowledgements
Acknowledgements	<i>Positiv und negativ (Fehlernachrichten)</i>	<i>Positiv und negativ (Fehlernachrichten)</i>	<i>Keine Fehlerantworten (nur positive Acknowledgements)</i>

features and functions	h/p/cosmos® coscom® v3	h/p/cosmos® coscom® v4	Trackmaster (TMX 425, 28/03/2003)
Failsafe	Optional. Setting variable (recommendation 1 second). Expiry is detectable via request.	Mandatory. Using action for active control required. Expiry is detectable via request. For passive control (read only) no failsafe is needed.	Optional possible. Presetting 0.5 seconds (latest MCU5 implementation: 2 seconds). Expiry is not transmitted.
Failsafe	<i>Optional. Einstellung variabel (Empfehlung 1 Sekunde). Ablauf kann über Abfrage festgestellt werden.</i>	<i>Zwingend: Verwendung für aktive Steuerung vorgeschrieben. Ablauf kann über Action festgestellt werden. Für passive Steuerung (lesend) ist kein Failsafe notwendig.</i>	<i>Optional möglich. Vorgabe 0.5 Sekunden (aktuelle MCU5 Implementierung zwei Sekunden). Ablauf wird nicht übermittelt.</i>
Checksum	Optional. A message checksum can be activated <i>Optional. Eine Prüfsumme für Nachrichten kann eingeschaltet werden.</i>	Mandatory. A message checksum must be used. <i>Zwingend: Die Verwendung der Prüfsumme für Nachrichten ist vorgeschrieben.</i>	No actual checksum. Echo of received commands optionally possible. <i>Keine Prüfsumme. Echo von empfangenen Kommandos optional möglich.</i>
Request control	Not available <i>Nicht verfügbar</i>	Active external control must request control before sending new commands like setting speed value. Auto-confirm see chapter „control requester“ <i>Aktive externe Steuerungen müssen um Erlaubnis fragen, bevor extern gesteuert werden kann. Auto-confirm – siehe Kapitel „control requester“</i>	Not available. <i>Nicht verfügbar.</i>
IEC 62304 / ISO 14971	Can be implemented in own projects. <i>Kann in eigenen Projekten implementiert werden.</i>	Can be implemented in own projects. <i>Kann in eigenen Projekten implementiert werden.</i>	unknown <i>unbekannt</i>
free DLL download and publication	available on www.coscom.org with valuable controls and objects erhältlich auf www.coscom.org	No release version available yet, but coming soon. <i>Betaversion V1.0.0.0 available on request: coscom_V4_Client.dll (2020-10-12/2020-10-13)</i>	unknown <i>unbekannt</i>
Firmware update and programming functions and features for treadmill MCU MicroControllerUnit	MCU5	no firmware update via USB	no
free Windows PC software for remote control and maintenance kostenlose PC Software für Fernsteuerung und Wartung	para control 4.1 https://www.hpcosmos.com/en/products/software	para control 6 is under development	unknown

Summary:

1. The h/p/cosmos coscom v4 is an enhancement to coscom v3 especially in terms of safety.
2. coscom v4 is much more simple in it's architecture compared to coscom v3, because all special features (like firmware update and programming features) remain in coscom v3.
3. It significantly reduces the needed documentation and training time.
4. Important standards / norms like EN 62304 Software Lifecycle Processes for medical devices and ISO 14971 Risk Management can be achieved in your projects with coscom v3 and coscom v4.
5. The coscom .net objects for coscom v3 are a great help for programmers to implement sophisticated functions with minor effort.
6. coscom v3 allow the use of the free PC software para control, so the treadmills and ergometers can be remote controlled and programmed via external PC or laptop and also important features like firmware update, error diagnostics, resets, etc can be performed via the external h/p/cosmos Windows software para control.
7. All h/p/cosmos and h/p/cosmos OEM treadmills with MCU5 from manufacturing date 2019 are equipped with coscom v3 and additionally with coscom v4.
8. **Update your ECG, VO2max and CPET devices and other equipment and software to coscom v4 in time, because due to MDR regulatory affairs and technology reasons all new MCU6 UserTerminals with TouchScreen launched from the year 2020 for treadmills and ergometers will not have coscom v3 and Trackmaster or other protocols included any more, but only coscom v4.**

Zusammenfassung:

1. *Das h/p/cosmos coscom v4 ist eine konsequente Weiterentwicklung von coscom v3 speziell in Punkto Sicherheit.*
2. *coscom v4 ist viel einfacher in der Architektur im Vergleich zu coscom v3, weil alle speziellen Funktionen (wie z.B. Firmware update und Programmierfunktionen) in coscom v3 verbleiben.*
3. *Es reduziert den Dokumentationsumfang und die Einarbeitungszeit erheblich.*
4. *Einhaltung wichtiger Normen wie EN62304 Software Lebenszyklus Prozesse für Medizinprodukte und Risikomanagement nach EN14971 sind mit coscom v3 und coscom v4 in ihren Projekten möglich.*
5. *Die coscom .net objects für coscom v3 sind eine grosse Hilfe für Programmierer um moderne Funktionen ohne grossen Aufwand zu implementieren.*
6. *coscom v3 ermöglichen die Nutzung der kostenlose PC Software para control, mit der Laufbänder und Ergometer über externen PC oder Laptop ferngesteuert und programmiert werden können und weitere wichtige Funktionen wie Firmware Updates, Fehlerdiagnose, Resets, etc, über diese externe Windows Software para control ermöglichen.*
7. *Alle h/p/cosmos und h/p/cosmos OEM Laufbänder mit MCU5 ab Baujahr 2019 sind sowohl mit coscom v3 als auch zusätzlich mit coscom v4 ausgestattet.*
8. **Updaten Sie Ihre EKGs, VO2max und CPET Systeme sowie andere Geräte und Software zeitnahe auf coscom v4, weil aufgrund MDR und Regulatorischen Anforderungen sowie aus technologischen Gründen alle neuen MCU6 UserTerminals mit TouchScreen produziert ab dem Jahr 2020 für Laufbänder und Ergometers nicht mehr mit coscom v3 und Trackmaster oder anderen Schnittstellen-Protokollen ausgestattet sein werden, sondern nur noch mit coscom v4.**